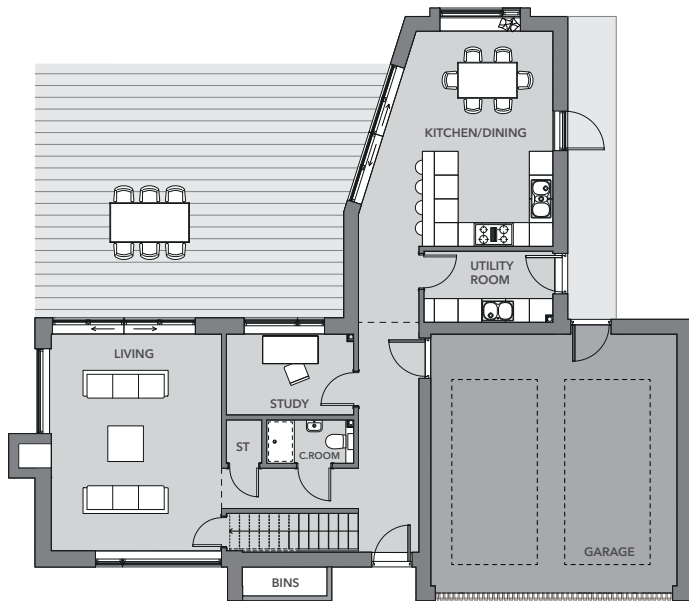


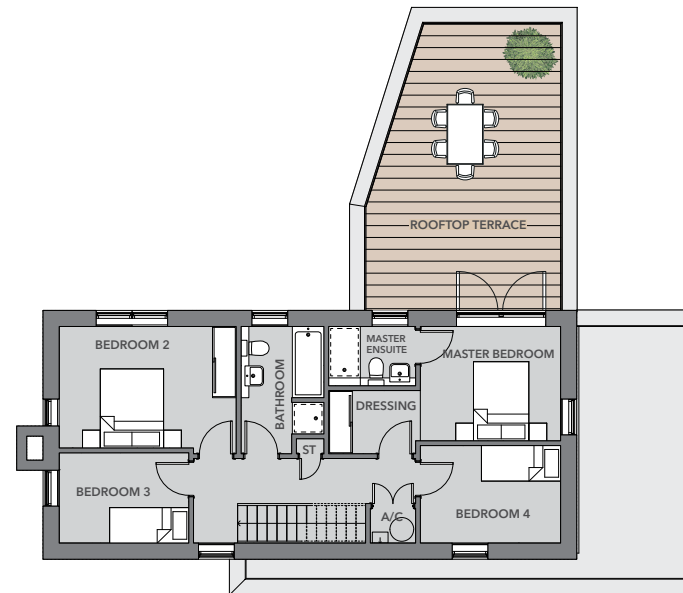
THE CORNER HOUSE

4 BED | 1,743 SQ FT | PLOTS 1, 10, 33



GROUND FLOOR

Kitchen/Dining	16ft 1in x 17ft 8in	4917mm x 5438mm	Utility Room	10ft 7in x 5ft 9in	3265mm x 1800mm
Living	14ft 1in x 17ft 9in	4306mm x 5479mm	Cloakroom	7ft 2in x 3ft 6in	2200mm x 1100mm
Study	10ft 5in x 6ft 7in	3219mm x 2050mm			



FIRST FLOOR

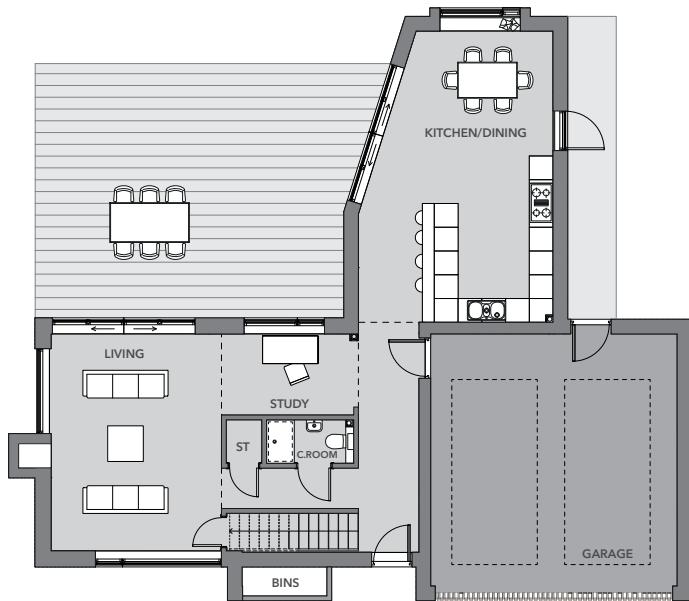
Master Bedroom	11ft 6in x 9ft 4in	3545mm x 2892mm	Bedroom 3	11ft 6in x 8ft 1in	3545mm x 2469mm
Dressing	7ft 2in x 5ft 2in	2200mm x 1600mm	Bedroom 4	10ft 7in x 7ft 5in	3279mm x 2288mm
Master Ensuite	7ft 2in x 4ft 9in	2200mm x 1500mm	Bathroom	6ft 8in x 10ft 5in	2098mm x 3219mm
Bedroom 2	14ft 6in x 10ft 0in	4479mm x 3072mm			

THE CORNER HOUSE

(ALTERNATIVE LAYOUT OPTION)

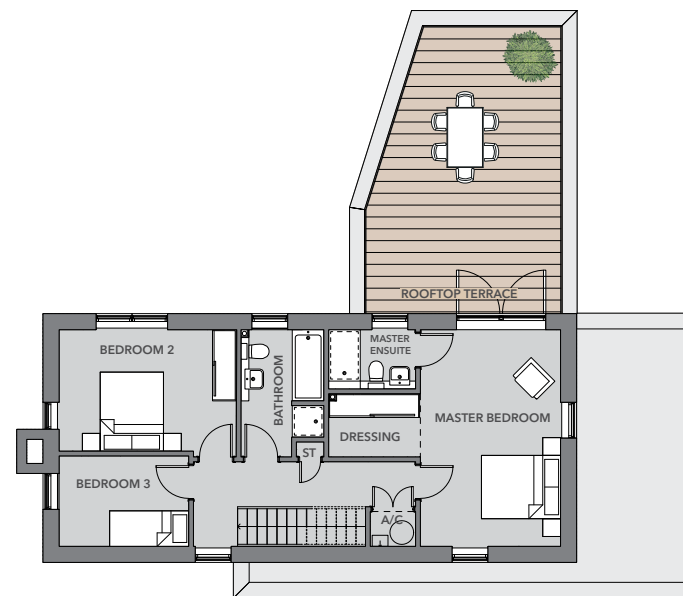
3 BED | 1,743 SQ FT | PLOTS 1, 10, 33

On the ground floor you can open up the kitchen and living areas into one big free-flowing space - perfect for entertaining - and you can change to a three-bedroom house by supersizing the master bedroom which has roof terrace access.



GROUND FLOOR

Kitchen/Dining	16ft 1in x 24ft 1in	4917mm x 7357mm
Living	14ft 1in x 17ft 9in	4306mm x 5479mm
Study	11ft 3in x 6ft 7in	3457mm x 2050mm
Cloakroom	7ft 2in x 3ft 6in	2200mm x 1100mm



FIRST FLOOR

Master Bedroom	11ft 6in x 17ft 9in	3545mm x 5479mm	Bedroom 2	14ft 6in x 10ft 0in	4479mm x 3072mm
Dressing	7ft 6in x 5ft 2in	2319mm x 1600mm	Bedroom 3	10ft 7in x 7ft 5in	3279mm x 2288mm
Master Ensuite	7ft 2in x 4ft 9in	2200mm x 1500mm	Bathroom	6ft 8in x 10ft 5in	2098mm x 3219mm