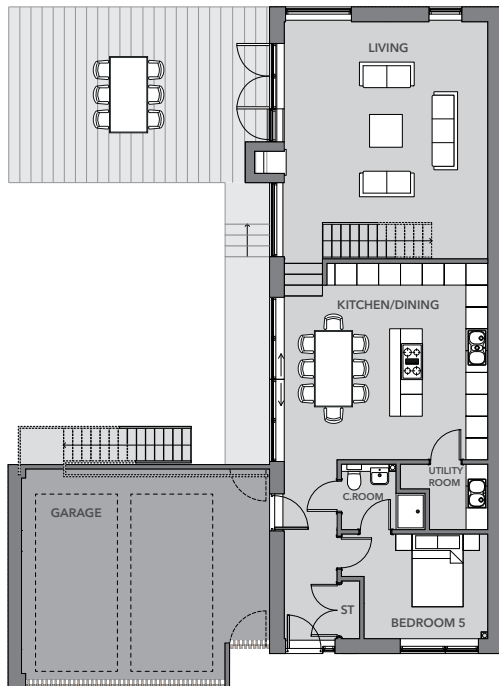


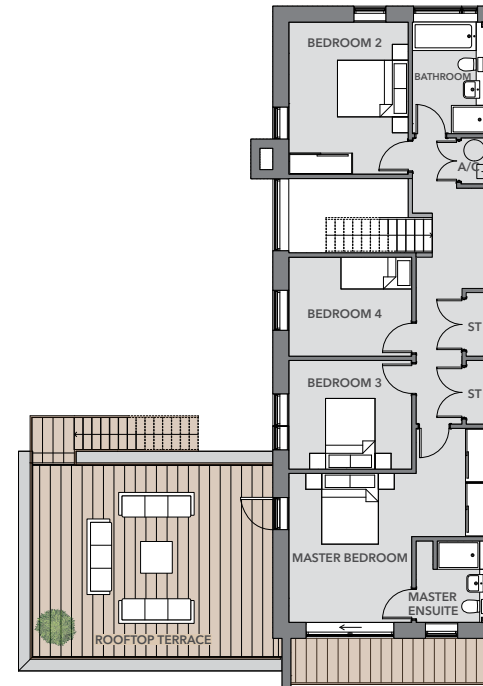
THE GALLERY HOUSE

5 BED | 1,980 SQ FT | PLOTS 11-15



GROUND FLOOR

Kitchen/Dining	17ft 7in x 18ft 3in	5400mm x 5592mm
Utility Room	5ft 9in x 5ft 2in	1800mm x 1604mm
Living	21ft 3in x 18ft 3in	6519mm x 5592mm
Bedroom 5	9ft 4in x 11ft 1in	2876mm x 3404mm
Cloakroom	5ft 9in x 4ft 9in	1800mm x 1500mm



FIRST FLOOR

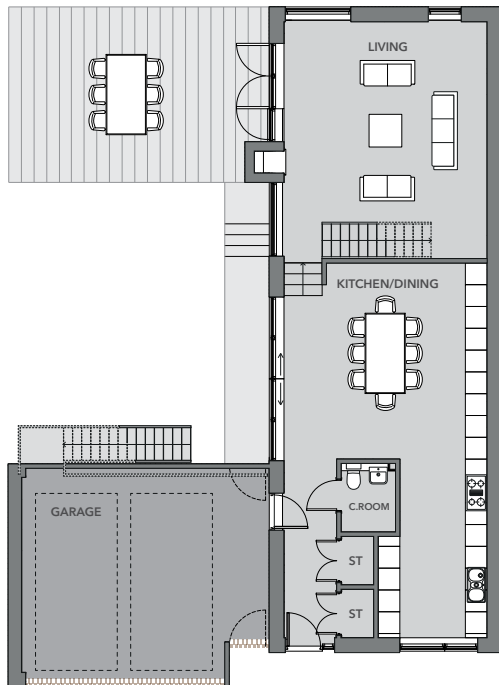
Master Bedroom	13ft 8in x 11ft 3in	4208mm x 3473mm
Master Ensuite	7ft 5in x 6ft 5in	2300mm x 2000mm
Bedroom 2	14ft 0in x 11ft 0in	4275mm x 3373mm
Bedroom 3	10ft 0in x 11ft 3in	3070mm x 3473mm
Bedroom 4	9ft 1in x 11ft 3in	2800mm x 3473mm
Bathroom	10ft 3in x 6ft 8in	3151mm x 2100mm

THE GALLERY HOUSE

(ALTERNATIVE LAYOUT OPTION)

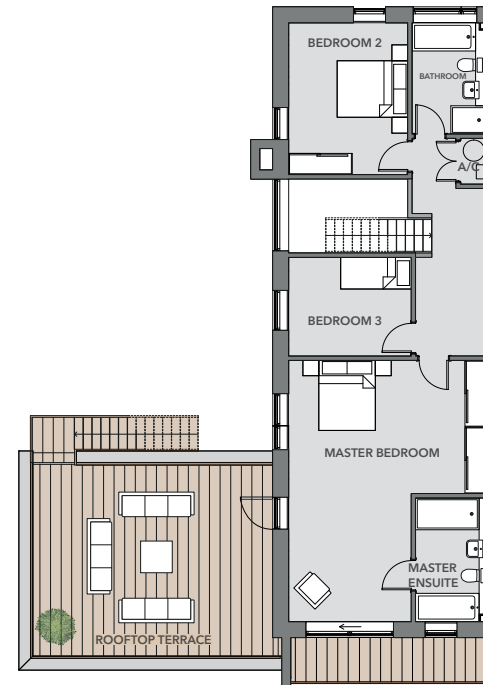
3 BED | 1,980 SQ FT | PLOTS 11-15

Open up the kitchen area to give you a fantastic space to cook and entertain. Upstairs, enjoy a relaxing bath in the enlarged ensuite and master bedroom suite. This option has three bedrooms.



GROUND FLOOR

Kitchen/Dining	33ft 8in x 18ft 3in	10316mm x 5592mm
Living	21ft 3in x 18ft 3in	6519mm x 5592mm
Cloakroom	6ft 1in x 4ft 9in	1888mm x 1500mm



FIRST FLOOR

Master Bedroom	24ft 2in x 16ft 2in	7397mm x 4942mm
Master Ensuite	11ft 4in x 6ft 5in	3500mm x 2000mm
Bedroom 2	14ft 1in x 11ft 0in	4300mm x 3373mm
Bedroom 3	9ft 1in x 11ft 3in	2800mm x 3473mm
Bathroom	10ft 3in x 6ft 8in	3151mm x 2100mm