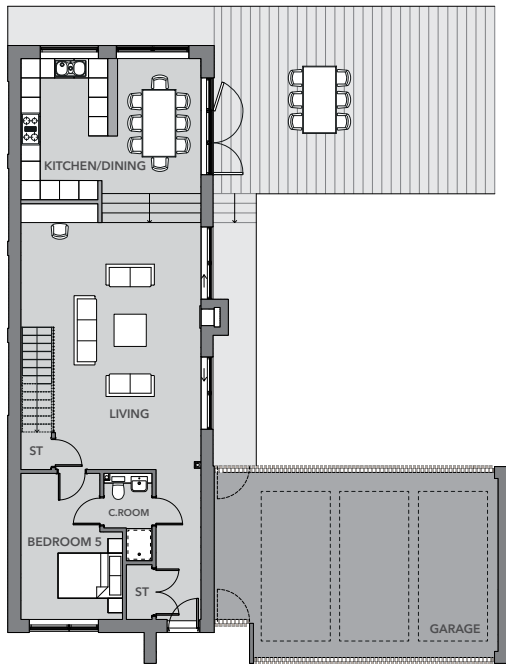


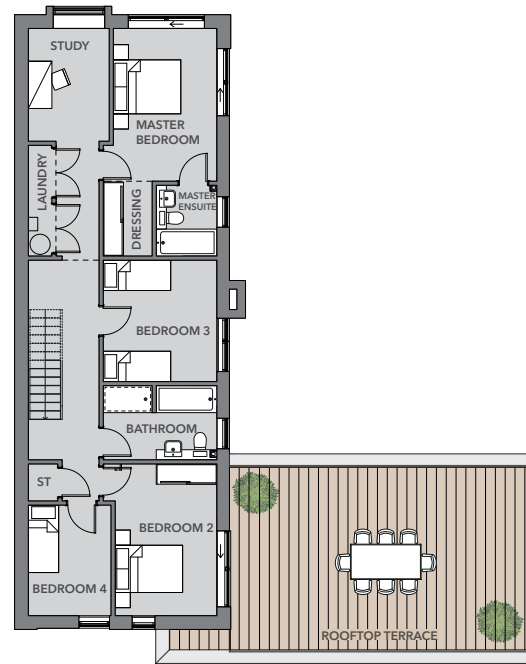
# THE LONG HOUSE

5 BED | 2,045 SQ FT | PLOTS 3, 4, 7, 9



## GROUND FLOOR

Kitchen/Dining	13ft 7in x 18ft 3in	4189mm x 5592mm
Living	25ft 1in x 18ft 3in	7664mm x 5592mm
Bedroom 5	14ft 8in x 10ft 3in	4533mm x 3154mm
Cloakroom	5ft 5in x 4ft 9in	1695mm x 1500mm



## FIRST FLOOR

Master Bedroom	14ft 8in x 10ft 0in	4528mm x 3073mm
Dressing	7ft 2in x 4ft 7in	2219mm x 1454mm
Master Ensuite	6ft 8in x 5ft 9in	2100mm x 1800mm
Bedroom 2	14ft 7in x 9ft 9in	4500mm x 3019mm
Bedroom 3	11ft 8in x 11ft 0in	3600mm x 3373mm
Bedroom 4	10ft 7in x 8ft 0in	3281mm x 2454mm
Study	10ft 9in x 7ft 8in	3344mm x 2400mm
Bathroom	7ft 2in x 11ft 0in	2200mm x 3373mm