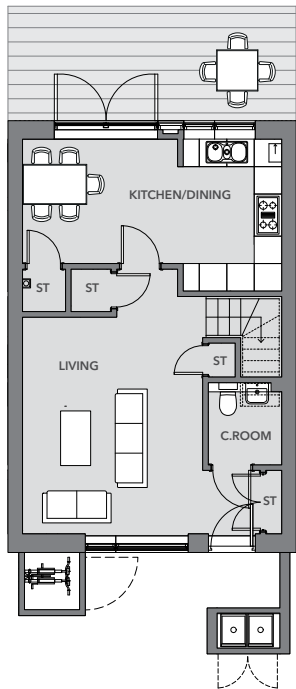


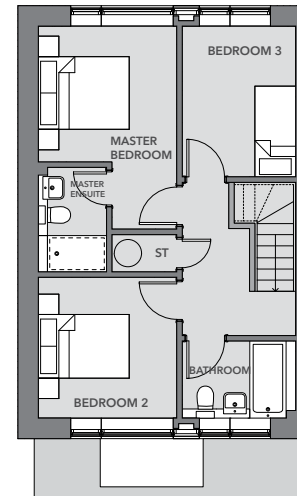
THE SHORT HOUSE

3 BED | 1,033 SQ FT | PLOTS 23-25



GROUND FLOOR

Kitchen/Dining	18ft 5in x 10ft 8in	5665mm x 3319mm
Living	12ft 9in x 15ft 5in	3940mm x 4741mm
Cloakroom	5ft 2in x 5ft 9in	1606mm x 1800mm



FIRST FLOOR

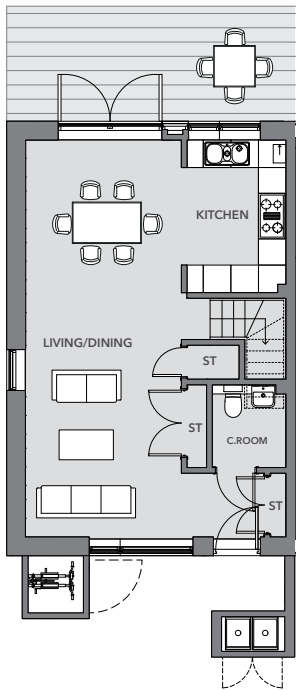
Master Bedroom	9ft 9in x 14ft 6in	3046mm x 4470mm
Ensuite	4ft 9in x 7ft 5in	1500mm x 2300mm
Bedroom 2	9ft 9in x 10ft 1in	3046mm x 3101mm
Bedroom 3	8ft 2in x 10ft 8in	2500mm x 3319mm
Bathroom	8ft 2in x 5ft 5in	2500mm x 1700mm

THE SHORT HOUSE

(ALTERNATIVE LAYOUT OPTIONS)

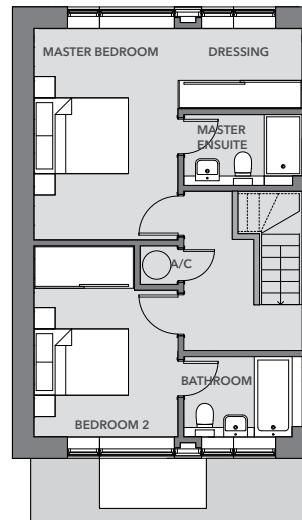
2/3 BED | 1,033 SQ FT | PLOTS 23-25

You can fully open up the ground floor to provide one continuous living-dining space that flows out to the garden. Upstairs you can choose to rejig the bedrooms to two bigger doubles, both with their own ensuite bathrooms - perfect for house sharers.



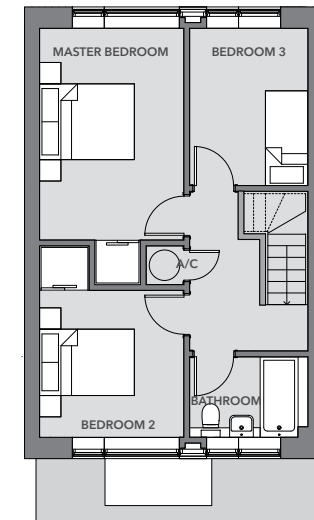
GROUND FLOOR

Kitchen	7ft 0in x 6ft 9in	2155mm x 2119mm
Living/Dining	11ft 1in x 24ft 3in	3391mm x 7429mm
Cloakroom	5ft 2in x 5ft 9in	1606mm x 1800mm



FIRST FLOOR (OPTION 2)

Master Bedroom	9ft 9in x 14ft 6in	3046mm x 4470mm
Dressing	8ft 5in x 5ft 4in	2619mm x 1675mm
Master Ensuite	8ft 2in x 4ft 9in	2500mm x 1500mm
Bedroom 2	9ft 9in x 10ft 1in	3046mm x 3101mm
Bathroom	8ft 2in x 5ft 5in	2500mm x 1700mm



FIRST FLOOR (OPTION 3)

Master Bedroom	10ft 1in x 14ft 6in	3091mm x 4470mm
Bedroom 2	10ft 1in x 10ft 1in	3091mm x 3101mm
Bedroom 3	8ft 0in x 10ft 8in	2455mm x 3319mm
Bathroom	8ft 0in x 5ft 5in	2455mm x 1700mm