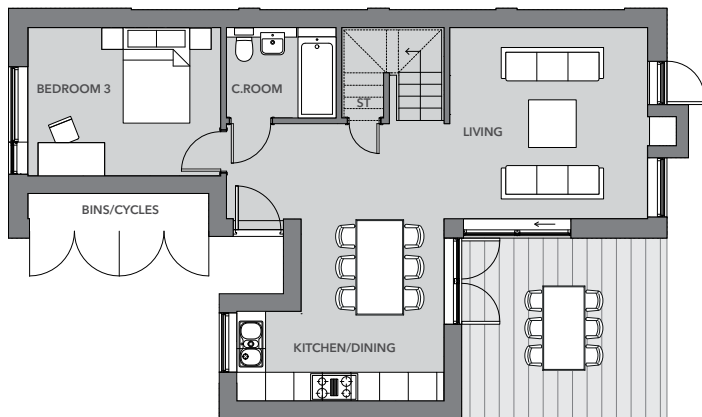


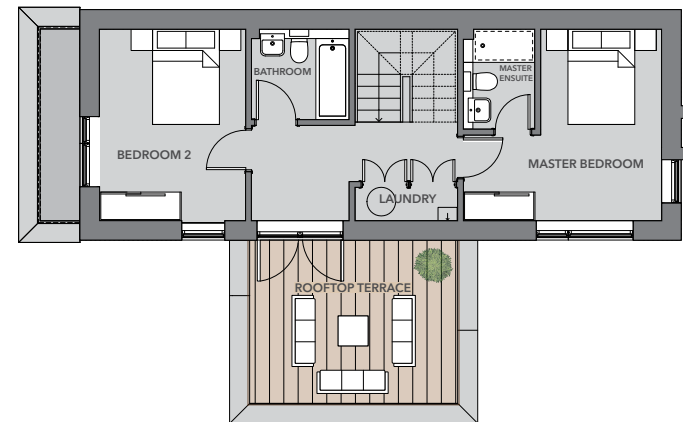
THE T HOUSE

3 BED | 1,184 SQ FT | PLOTS 44 - 50



GROUND FLOOR

Kitchen/Dining	14ft 2in x 12ft 5in	4354mm x 3825mm
Living	13ft 6in x 13ft 1in	4156mm x 4017mm
Bedroom 3	13ft 1in x 10ft 2in	4020mm x 3117mm
Cloakroom	7ft 6in x 6ft 2in	2334mm x 1900mm



FIRST FLOOR

Master Bedroom	13ft 6in x 13ft 1in	4156mm x 4017mm
Master Ensuite	4ft 9in x 6ft 8in	1500mm x 2100mm
Bedroom 2	10ft 0in x 13ft 1in	3069mm x 4017mm
Bathroom	6ft 7in x 6ft 2in	2048mm x 1900mm